

# **INSIDE THE CIRCLE:**

## **A PROVEN METHOD FOR A SUCCESSFUL MARCHING BAND**

*By Matt and Ben Harloff*

**FULL ENSEMBLE CHAPTER**

**CLARINET PART**

**INSIDE THE CIRCLE: A PROVEN METHOD FOR A SUCCESSFUL MARCHING BAND**

**FULL ENSEMBLE CHAPTER: CLARINET PART**

*by Matt and Ben Harloff*

**TABLE OF CONTENTS**

Breathing Exercises.....Page 3

Long Tones.....Page 4

- 9 Count Tones on F Concert: Page 4
- 9 Count Tones on Bb Concert: Page 4
- 8 Count Tones on F Concert: Page 4
- 8 Count Tones on Bb Concert: Page 5
- Release Exercise on F Concert: Page 5

Stagger Breathing.....Page 6

Flexibility/Scales.....Page 7

- Flexibility Exercise #1: Page 7
- Flexibility Exercise #2: Page 7
- Flexibility Exercise #3: Page 8
- Flexibility Exercise #4: Page 8

Note Length/Shape Exercise.....Page 10

Show Articulation Examples.....Page 12

- Basic 8 Staccato Eighth Notes: Page 12
- Show Articulation Example #1: Page 12
- Show Articulation Example #2: Page 13
- Show Articulation Example #3: Page 13

Tuning Exercises.....Page 15

- Ensemble Fundamental Tuning Exercise: Page 15
- Just Intonation Tuning Exercises: Page 16
  - Bb Major Scale: Page 16
  - Bb Major Chord, F Major Chord, C Major Chord, Eb Major Chord, Ab Major Chord: Page 16
  - G Minor Scale: Page 16
  - G Minor Chord, D Minor Chord, A Minor Chord, C Minor Chord, F Minor Chord: Page 16

Tuning Charts.....Page 18

Chorales.....Page 20

- “O Sacred Head Now Wounded” by JS Bach: Page 20
- “Be Thou My Vision”: Page 20
- “Faith of Our Fathers” by H Hemy: Page 20

Full Volume.....Page 22

- Excerpt #1: Page 22
- Excerpt #2: Page 22
- Excerpt #3: Page 22

# **Breathing Exercises**

## **Breathing Exercise #1: Smooth and Slow**

Inhale 8-Exhale 8 (repeats), Inhale 6-Exhale 6 (repeats), Inhale 4-Exhale 4 (repeats)

## **Breathing Exercise #2: Slow to Fast**

Inhale 8-Exhale 8 (repeats), Inhale 7-Exhale 7 (repeats), Inhale 6-Exhale 6 (repeats), 5, 4, 3, 2, 1

## **Breathing Exercise #3: Fast to Slow**

Inhale 1-Exhale 1 (repeats), Inhale 2-Exhale 2 (repeats), Inhale 3-Exhale 3 (repeats), 4, 5, 6, 7, 8

## **Breathing Exercise #4: Expand In/Contract Out**

Inhale 8 Counts, Hold 10 seconds and sip small breaths, Exhale 1 count,  
Hiss 10 seconds, Inhale 1 Count, Exhale 1 Count, Relax

## **Breathing Exercise #5: Dynamic Breathing**

Sustain a piano Dynamic level for 4-8 counts, Rest for 4 counts (repeats)  
Sustain a Mezzo Forte Dynamic level for 4-8 counts, Rest for 4 counts (repeats)  
Sustain a Fortissimo Dynamic level for 4-8 counts, Rest for 4 counts (repeats)

## **Breathing Exercise #6: Long Tone Exercise**

Perform any of the Long Tone Exercises as a breathing exercise.

## **Breathing Exercise #7: Note Length/Shape Exercise**

Perform any of the Note Length/Shape Exercises as a breathing exercise.

## **Breathing Exercise #8: Show Excerpts**

Choose an excerpt from your show and perform it as a breathing exercise.

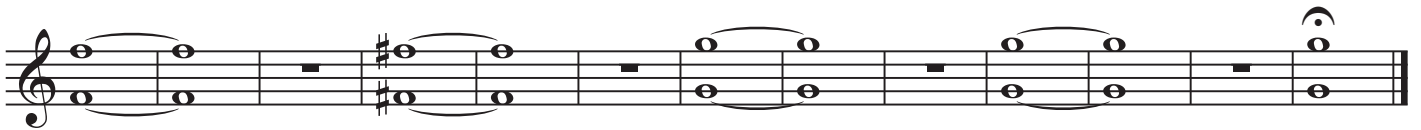
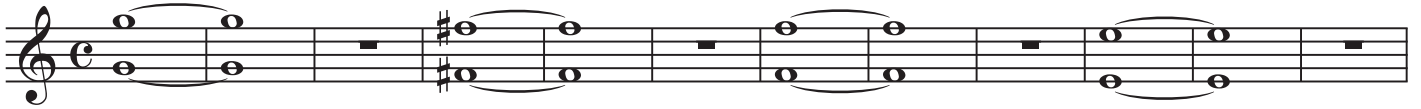
INSIDE THE CIRCLE: A PROVEN METHOD FOR A SUCCESSFUL MARCHING BAND

FULL ENSEMBLE CHAPTER: CLARINET PART

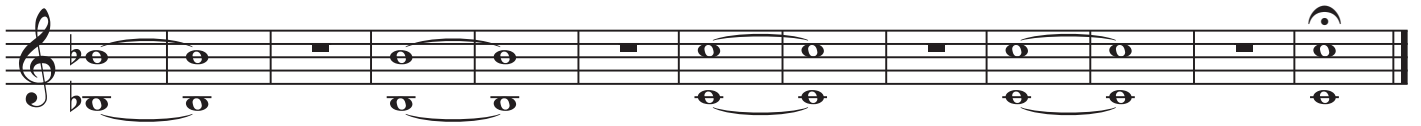
by Matt and Ben Harloff

# Long Tones

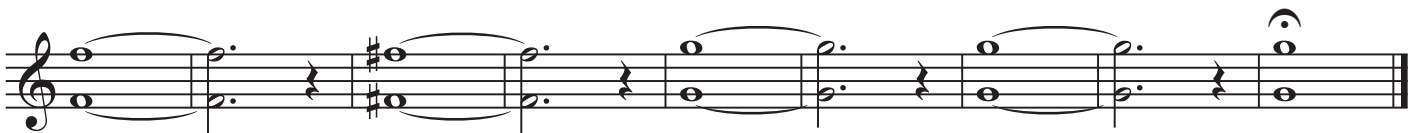
9 Count Tones on F Concert



9 Count Tones on Bb Concert



8 Count Tones on F Concert



# INSIDE THE CIRCLE: A PROVEN METHOD FOR A SUCCESSFUL MARCHING BAND

## FULL ENSEMBLE CHAPTER: CLARINET PART

by Matt and Ben Harloff

### Long Tones

#### 8 Count Tones on Bb Concert

The musical notation consists of two staves. The first staff is in G major (one sharp) and contains four measures of music. Each measure has a half note on the upper staff and a dotted quarter note on the lower staff, with a slur connecting them. The notes are G4, A4, B4, and C5. The second staff is in F major (one flat) and contains four measures. Each measure has a half note on the upper staff and a dotted quarter note on the lower staff, with a slur connecting them. The notes are F4, G4, A4, and B4. The piece ends with a double bar line.

#### Release Exercise on F Concert

The musical notation is on a single staff in F major (one flat). It contains eight measures. The first four measures are: 1) half note F4, dotted quarter G4; 2) half note G4, dotted quarter A4; 3) half note A4, dotted quarter B4; 4) half note B4, dotted quarter C5. The last four measures are: 5) half note C5, dotted quarter B4; 6) half note B4, dotted quarter A4; 7) half note A4, dotted quarter G4; 8) half note G4, dotted quarter F4. The piece ends with a double bar line.

INSIDE THE CIRCLE: A PROVEN METHOD FOR A SUCCESSFUL MARCHING BAND

FULL ENSEMBLE CHAPTER: CLARINET PART

by Matt and Ben Harloff

# Stagger Breathing Exercises

**Exercise 1A** TEMPO: FAST

Musical notation for Exercise 1A in 4/4 time. It consists of a single staff with a treble clef and a key signature of one flat. The first measure contains a half note with a dynamic marking of *mp*. A slur above the staff covers the first two measures, with the instruction "4-8 times" above it. The second measure contains a half note with a dynamic marking of *f*. The third measure contains a half note with a dynamic marking of *mp*. A breath mark (a vertical line with a horizontal bar) is placed above the staff between the second and third measures, with the word "Breathe" written above it. The piece ends with a repeat sign and a final whole note with a dynamic marking of *mp*.

Musical notation for Exercise 1B in 4/4 time. It consists of a single staff with a treble clef and a key signature of one flat. The first measure contains a half note with a dynamic marking of *f*. A slur above the staff covers the first two measures, with the instruction "4-8 times" above it. The second measure contains a half note with a dynamic marking of *mp*. A breath mark is placed above the staff between the second and third measures, with the word "Breathe" written above it. The third measure contains a half note with a dynamic marking of *f*. The piece ends with a repeat sign and a final whole note with a dynamic marking of *f*.

Musical notation for Exercise 1C in 4/4 time. It consists of a single staff with a treble clef and a key signature of one flat. The first measure contains a half note with a dynamic marking of *f*. A slur above the staff covers the first two measures, with the instruction "4-8 times" above it. The second measure contains a half note with a dynamic marking of *mp*. A breath mark is placed above the staff between the second and third measures, with the word "Breathe" written above it. The third measure contains a half note with a dynamic marking of *f*. The piece ends with a repeat sign and a final whole note with a dynamic marking of *f*.

Musical notation for Exercise 1D in 4/4 time. It consists of a single staff with a treble clef and a key signature of one flat. The first measure contains a whole rest with a breath mark above it and the word "Breathe" written above. A slur above the staff covers the next two measures, with the instruction "4-8 times" above it. The second measure contains a half note with a dynamic marking of *mp*. The third measure contains a half note with a dynamic marking of *f*. A second slur above the staff covers the next two measures, with the instruction "4-8 times" above it. The fourth measure contains a half note with a dynamic marking of *mp*. The piece ends with a repeat sign and a final whole note with a dynamic marking of *mp*.

**Exercise 2A** TEMPO: MODERATE-SLOW

Musical notation for Exercise 2A in 4/4 time. It consists of a single staff with a treble clef and a key signature of one flat. The first measure contains a half note with a dynamic marking of *f*. A slur above the staff covers the first two measures, with the instruction "4-8 times" above it. The second measure contains a half note with a dynamic marking of *mp*. A breath mark is placed above the staff between the second and third measures, with the word "Breathe" written above it. The third measure contains a half note with a dynamic marking of *f*. A second slur above the staff covers the next two measures, with the instruction "4-8 times" above it. The fourth measure contains a half note with a dynamic marking of *mp*. A breath mark is placed above the staff between the fourth and fifth measures, with the word "Breathe" written above it. The fifth measure contains a half note with a dynamic marking of *f*. The piece ends with a repeat sign and a final whole note with a dynamic marking of *mp*.

Musical notation for Exercise 2B in 4/4 time. It consists of a single staff with a treble clef and a key signature of one flat. The first measure contains a half note with a dynamic marking of *f*. A slur above the staff covers the first two measures, with the instruction "4-8 times" above it. The second measure contains a half note with a dynamic marking of *mp*. A breath mark is placed above the staff between the second and third measures, with the word "Breathe" written above it. The third measure contains a half note with a dynamic marking of *f*. A second slur above the staff covers the next two measures, with the instruction "4-8 times" above it. The fourth measure contains a half note with a dynamic marking of *mp*. A breath mark is placed above the staff between the fourth and fifth measures, with the word "Breathe" written above it. The fifth measure contains a half note with a dynamic marking of *f*. The piece ends with a repeat sign and a final whole note with a dynamic marking of *mp*.

Musical notation for Exercise 2C in 4/4 time. It consists of a single staff with a treble clef and a key signature of one flat. The first measure contains a half note with a dynamic marking of *f*. A slur above the staff covers the first two measures, with the instruction "4-8 times" above it. The second measure contains a half note with a dynamic marking of *mp*. A breath mark is placed above the staff between the second and third measures, with the word "Breathe" written above it. The third measure contains a half note with a dynamic marking of *f*. A second slur above the staff covers the next two measures, with the instruction "4-8 times" above it. The fourth measure contains a half note with a dynamic marking of *mp*. A breath mark is placed above the staff between the fourth and fifth measures, with the word "Breathe" written above it. The fifth measure contains a half note with a dynamic marking of *f*. The piece ends with a repeat sign and a final whole note with a dynamic marking of *mp*.

Musical notation for Exercise 2D in 4/4 time. It consists of a single staff with a treble clef and a key signature of one flat. The first measure contains a whole rest with a breath mark above it and the word "Breathe" written above. A slur above the staff covers the next two measures, with the instruction "4-8 times" above it. The second measure contains a half note with a dynamic marking of *mp*. The third measure contains a half note with a dynamic marking of *f*. A second slur above the staff covers the next two measures, with the instruction "4-8 times" above it. The fourth measure contains a half note with a dynamic marking of *mp*. A breath mark is placed above the staff between the fourth and fifth measures, with the word "Breathe" written above it. The fifth measure contains a half note with a dynamic marking of *f*. A third slur above the staff covers the next two measures, with the instruction "4-8 times" above it. The sixth measure contains a half note with a dynamic marking of *mp*. The piece ends with a repeat sign and a final whole note with a dynamic marking of *mp*.

INSIDE THE CIRCLE: A PROVEN METHOD FOR A SUCCESSFUL MARCHING BAND

FULL ENSEMBLE CHAPTER: CLARINET PART

by Matt and Ben Harloff

# Flexibility/Scales

Flexibility Exercise #1

Musical score for Flexibility Exercise #1, measures 1-8. The score is arranged in two systems, each with three staves: Clarinet in A (ClA), Clarinet in Bb (ClB), and Clarinet in C (ClC). The music is in 4/4 time and features a variety of rhythmic patterns and melodic lines. The first system (measures 1-4) shows the ClA part with eighth-note runs and slurs, while ClB and ClC provide harmonic support with chords and single notes. The second system (measures 5-8) continues the exercise with similar patterns, ending with sustained notes in the final measure.

Flexibility Exercise #2

Musical score for Flexibility Exercise #2, measures 1-12. The score is arranged in two systems, each with three staves: Clarinet in A (ClA), Clarinet in Bb (ClB), and Clarinet in C (ClC). The music is in 4/4 time and features a variety of rhythmic patterns and melodic lines. The first system (measures 1-4) shows the ClA part with eighth-note runs and slurs, while ClB and ClC provide harmonic support with chords and single notes. The second system (measures 5-8) continues the exercise with similar patterns, ending with sustained notes in the final measure. The third system (measures 9-12) repeats the exercise with different melodic and harmonic variations, also ending with sustained notes.

**INSIDE THE CIRCLE: A PROVEN METHOD FOR A SUCCESSFUL MARCHING BAND**

**FULL ENSEMBLE CHAPTER: CLARINET PART**

*by Matt and Ben Harloff*

**Flexibility/Scales**

**Flexibility Exercise #3**

CLA  
CLB  
CLC

CLA  
CLB  
CLC

CLA  
CLB  
CLC

CLA  
CLB  
CLC



# INSIDE THE CIRCLE: A PROVEN METHOD FOR A SUCCESSFUL MARCHING BAND

## FULL ENSEMBLE CHAPTER: CLARINET PART

by Matt and Ben Harloff

### Flexibility/Scales

#### Flexibility Exercise #4

CL A

CL B

CL C

CL A

CL B

CL C

CL A

CL B

CL C

CL A

CL B

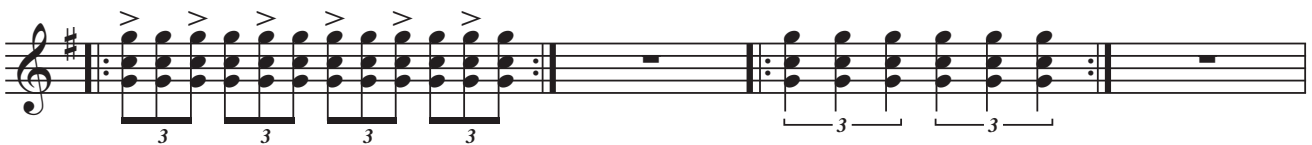
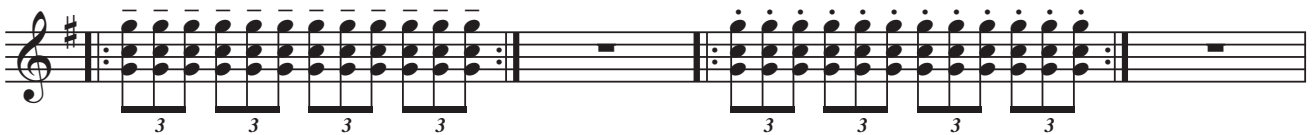
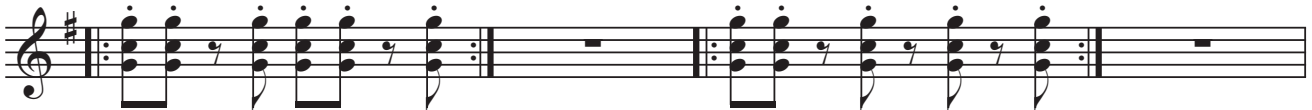
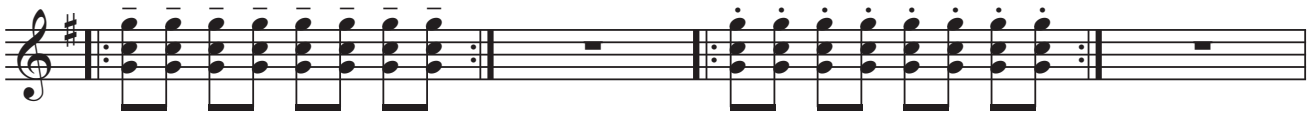
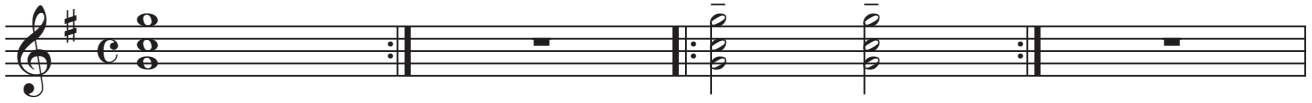
CL C

INSIDE THE CIRCLE: A PROVEN METHOD FOR A SUCCESSFUL MARCHING BAND

FULL ENSEMBLE CHAPTER: CLARINET PART

by Matt and Ben Harloff

# Note Length/Shape Exercise

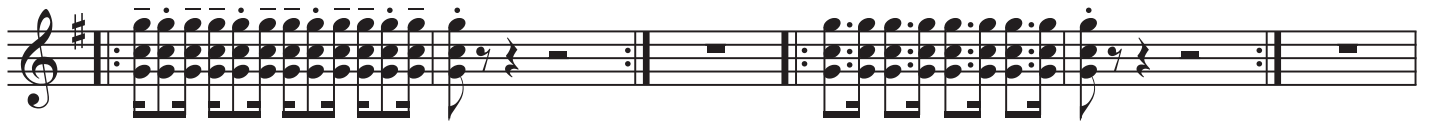
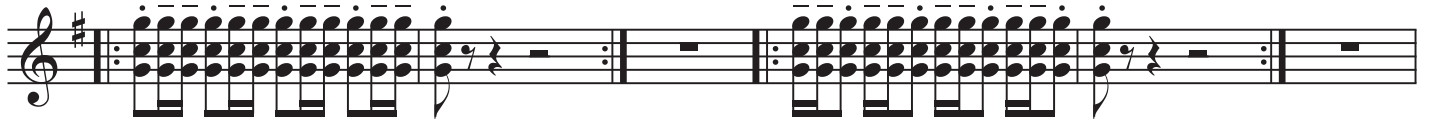


INSIDE THE CIRCLE: A PROVEN METHOD FOR A SUCCESSFUL MARCHING BAND

FULL ENSEMBLE CHAPTER: CLARINET PART

by Matt and Ben Harloff

Note Length/Shape Exercise



# Show Articulation Examples

## Basic 8 Staccato Eighth Notes

Four staves of music in treble clef, key signature of one sharp (F#), and common time (C). Each staff contains two measures of eighth-note chords, followed by a whole rest. The chords are: Staff 1: G4-A4-B4, C5; Staff 2: G4-A4-B4, C5; Staff 3: G4-A4-B4, C5; Staff 4: G4-A4-B4, C5. The notes are marked with a staccato symbol (a vertical line with a flag) and a dot above them.

## Show Articulation Example 1

Four staves of music in treble clef, key signature of one sharp (F#), and common time (C). Each staff contains two measures of eighth-note chords, followed by a whole rest. The chords are: Staff 1: G4-A4-B4, C5; Staff 2: G4-A4-B4, C5; Staff 3: G4-A4-B4, C5; Staff 4: G4-A4-B4, C5. The notes are marked with a staccato symbol (a vertical line with a flag) and a dot above them.

**INSIDE THE CIRCLE: A PROVEN METHOD FOR A SUCCESSFUL MARCHING BAND**

**FULL ENSEMBLE CHAPTER: CLARINET PART**

*by Matt and Ben Harloff*

Show Articulation Examples

Show Articulation Example 2

Musical notation for Show Articulation Example 2, consisting of four staves. The first staff is in treble clef with a key signature of one sharp (F#). The second and third staves are in bass clef with a key signature of one flat (Bb). The fourth staff is in treble clef with a key signature of one sharp (F#). The music features various articulation marks, including accents (>) and slurs, applied to chords and individual notes. The notation includes eighth and sixteenth notes, as well as rests.

Show Articulation Example 3

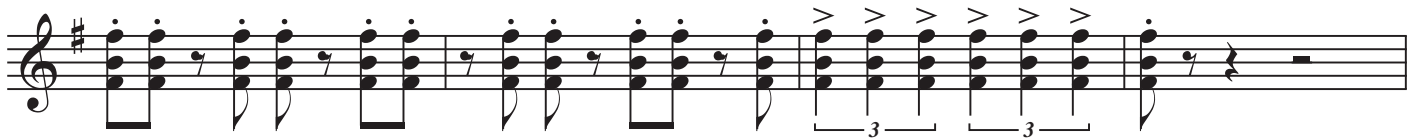
Musical notation for Show Articulation Example 3, consisting of three staves. The first and second staves are in treble clef with a key signature of one sharp (F#). The third staff is in bass clef with a key signature of one flat (Bb). The music features articulation marks such as accents (>) and slurs, along with triplet markings (indicated by a '3' in a bracket) over groups of notes. The notation includes eighth and sixteenth notes, as well as rests.

**INSIDE THE CIRCLE: A PROVEN METHOD FOR A SUCCESSFUL MARCHING BAND**

**FULL ENSEMBLE CHAPTER: CLARINET PART**

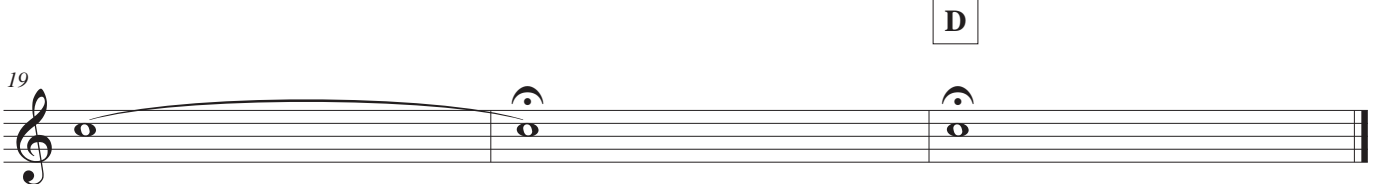
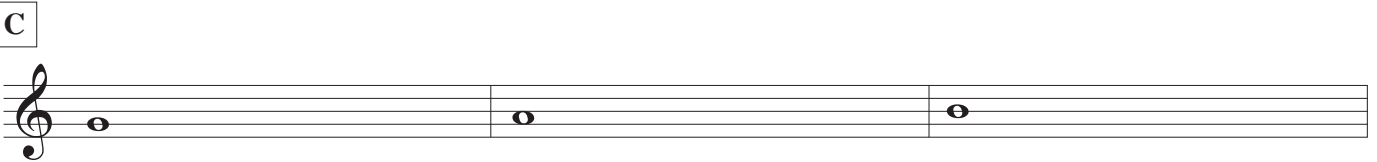
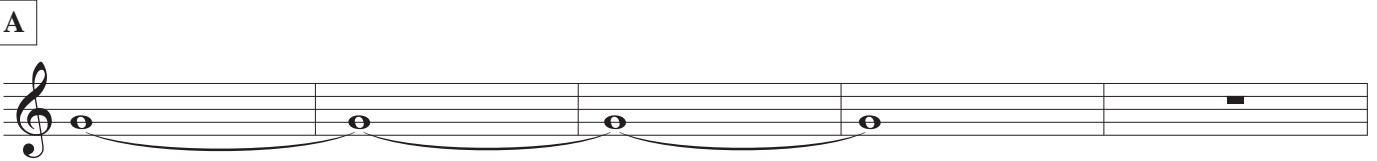
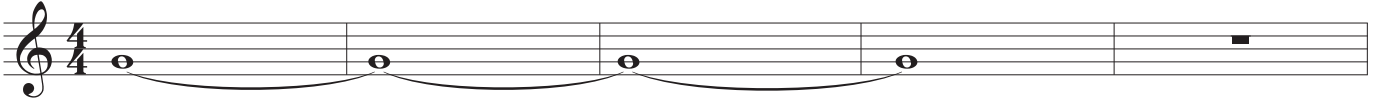
*by Matt and Ben Harloff*

Show Articulation Examples



# Ensemble Fundamental Tuning Exercise

♩ = 92



INSIDE THE CIRCLE: A PROVEN METHOD FOR A SUCCESSFUL MARCHING BAND

FULL ENSEMBLE CHAPTER: CLARINET PART

by Matt and Ben Harloff

# Just Intonation Tuning Exercises

**Bb Major Scale**

CL A

CL B

**Bb Major Chord**

CL B

CL B

**F Major Chord**

CL B

CL B

**C Major Chord**

CL B

CL B

**Eb Major Chord**

CL B

CL B

**Ab Major Chord**

CL B

CL B



**INSIDE THE CIRCLE: A PROVEN METHOD FOR A SUCCESSFUL MARCHING BAND**

**FULL ENSEMBLE CHAPTER: CLARINET PART**

*by Matt and Ben Harloff*

**Just Intonation Tuning Exercises**

**G Minor Scale**

Two staves of music for Clarinet Bb (Cl B). The top staff shows a scale of eighth notes with fingerings: 0, +4, +15, -2, +2, +14, -4, 0, -4, +14, +2, -2, +15, +4, 0. The bottom staff shows the same notes with slurs and breath marks.

**G Minor Chord**

Two staves of music for Clarinet Bb (Cl B). The top staff shows a G minor chord with fingerings: 0, +15, +2, 0. The bottom staff shows the same notes with slurs and breath marks.

**D Minor Chord**

Two staves of music for Clarinet Bb (Cl B). The top staff shows a D minor chord with fingerings: 0, +15, +2, 0. The bottom staff shows the same notes with slurs and breath marks.

**A Minor Chord**

Two staves of music for Clarinet Bb (Cl B). The top staff shows an A minor chord with fingerings: 0, +15, +2, 0. The bottom staff shows the same notes with slurs and breath marks.

**C Minor Chord**

Two staves of music for Clarinet Bb (Cl B). The top staff shows a C minor chord with fingerings: 0, +15, +2, 0. The bottom staff shows the same notes with slurs and breath marks.

**F Minor Chord**

Two staves of music for Clarinet Bb (Cl B). The top staff shows an F minor chord with fingerings: 0, +15, +2, 0. The bottom staff shows the same notes with slurs and breath marks.

**INSIDE THE CIRCLE: A PROVEN METHOD FOR A SUCCESSFUL MARCHING BAND**

**FULL ENSEMBLE CHAPTER: CLARINET PART**

*by Matt and Ben Harloff*

# Tuning Chart

**Materials:** Instrument, tuner and patience.

## Tuning Steps:

Step 1: Tune your fundamental pitch to get the instrument in tune. For Clarinet: C below the staff, G on the staff and G above the staff.

Step 2: Tune the note at a piano dynamic. Write down how many cents out of tune.

Step 3: Tune the note at a mezzo forte. Write down how many cents out of tune.

Step 4: Tune the note at a fortissimo. Write down how many cents out of tune.

Step 5: Experiment how to fix the intonation. Write down ways to place the note in tune.

Repeat Steps 2 through 4 all the way to the highest pitch.

\*\*\*Ways to adjust tuning: Firm-Up Embouchure. Loosen Embouchure. Alternate Fingering.

## Tips:

\*Start the chart with the lowest note.

\*When tuning each note, do not adjust the pitch to play in tune. Play the note as natural as possible.

This way you will be receiving your most accurate tendency on each pitch.

\*Each dynamic may have a different pitch tendency. Be patient with each dynamic to get the most accurate tendency.

\*Write +13 if you are sharp 13 cents. Write -10 if you are flat 10 cents. Write 0 if you are in tune.

\*Fix?: On the "Fix?" line write down what you need to do to adjust the pitch and play it in tune. You may want to fill out the entire chart come back later to fill in the "Fix?" line.

\*This sheet may take some time. You may have to complete the full chart in a couple of practice sessions.

The chart consists of five staves, each with three measures. The notes and dynamics are as follows:

Staff	Measure 1	Measure 2	Measure 3
1	C <sub>2</sub> p mf ff	G <sub>3</sub> p mf ff	G <sub>4</sub> p mf ff
2	C <sub>3</sub> p mf ff	F# <sub>3</sub> p mf ff	B <sub>b3</sub> p mf ff
3	F# <sub>3</sub> p mf ff	B <sub>b3</sub> p mf ff	G <sub>4</sub> p mf ff
4	F# <sub>3</sub> p mf ff	B <sub>b3</sub> p mf ff	G <sub>4</sub> p mf ff
5	C <sub>3</sub> p mf ff	G <sub>3</sub> p mf ff	G <sub>4</sub> p mf ff

**INSIDE THE CIRCLE: A PROVEN METHOD FOR A SUCCESSFUL MARCHING BAND**

**FULL ENSEMBLE CHAPTER: CLARINET PART**

*by Matt and Ben Harloff*

Tuning Chart

A musical staff in treble clef showing four measures. The notes are C4, C#4, B3, and C4.

p\_\_ mf\_\_ ff\_\_

p\_\_ mf\_\_ ff\_\_

p\_\_ mf\_\_ ff\_\_

Fix?\_\_\_\_\_

Fix?\_\_\_\_\_

Fix?\_\_\_\_\_

A musical staff in treble clef showing four measures. The notes are D#4, B3, C4, and D4.

p\_\_ mf\_\_ ff\_\_

p\_\_ mf\_\_ ff\_\_

p\_\_ mf\_\_ ff\_\_

Fix?\_\_\_\_\_

Fix?\_\_\_\_\_

Fix?\_\_\_\_\_

A musical staff in treble clef showing four measures. The notes are D#4, B3, C4, D#4, B3.

p\_\_ mf\_\_ ff\_\_

p\_\_ mf\_\_ ff\_\_

p\_\_ mf\_\_ ff\_\_

Fix?\_\_\_\_\_

Fix?\_\_\_\_\_

Fix?\_\_\_\_\_

A musical staff in treble clef showing four measures. The notes are C4, D4, D#4, B3, C4.

p\_\_ mf\_\_ ff\_\_

p\_\_ mf\_\_ ff\_\_

p\_\_ mf\_\_ ff\_\_

p\_\_ mf\_\_ ff\_\_

Fix?\_\_\_\_\_

Fix?\_\_\_\_\_

Fix?\_\_\_\_\_

Fix?\_\_\_\_\_

A musical staff in treble clef showing four measures. The notes are D#4, B3, C4, D#4, B3, C4.

p\_\_ mf\_\_ ff\_\_

p\_\_ mf\_\_ ff\_\_

p\_\_ mf\_\_ ff\_\_

p\_\_ mf\_\_ ff\_\_

Fix?\_\_\_\_\_

Fix?\_\_\_\_\_

Fix?\_\_\_\_\_

Fix?\_\_\_\_\_

A musical staff in treble clef showing four measures. The notes are C4, D#4, B3, C4, D#4, B3, C4.

p\_\_ mf\_\_ ff\_\_

p\_\_ mf\_\_ ff\_\_

p\_\_ mf\_\_ ff\_\_

p\_\_ mf\_\_ ff\_\_

Fix?\_\_\_\_\_

Fix?\_\_\_\_\_

Fix?\_\_\_\_\_

Fix?\_\_\_\_\_

A musical staff in treble clef showing four measures. The notes are C4, D#4, B3, C4, D#4, B3, C4.

p\_\_ mf\_\_ ff\_\_

p\_\_ mf\_\_ ff\_\_

p\_\_ mf\_\_ ff\_\_

p\_\_ mf\_\_ ff\_\_

Fix?\_\_\_\_\_

Fix?\_\_\_\_\_

Fix?\_\_\_\_\_

Fix?\_\_\_\_\_

INSIDE THE CIRCLE: A PROVEN METHOD FOR A SUCCESSFUL MARCHING BAND

FULL ENSEMBLE CHAPTER: CLARINET PART

by Matt and Ben Harloff

# Chorales

Clarinet Part 1

O Sacred Head Now Wounded by JS Bach

Musical notation for the first chorale, 'O Sacred Head Now Wounded' by JS Bach. It consists of two staves of music in G major and common time. The melody is written in treble clef and features a series of eighth and sixteenth notes, with several measures containing slurs and ties.

Be Thou My Vision

Musical notation for the second chorale, 'Be Thou My Vision'. It consists of two staves of music in D major and 3/4 time. The melody is written in treble clef and features a series of eighth and sixteenth notes, with several measures containing slurs and ties.

Faith of Our Fathers by H Hemy

Musical notation for the third chorale, 'Faith of Our Fathers' by H Hemy. It consists of two staves of music in D major and common time. The melody is written in treble clef and features a series of eighth and sixteenth notes, with several measures containing slurs and ties.

INSIDE THE CIRCLE: A PROVEN METHOD FOR A SUCCESSFUL MARCHING BAND

FULL ENSEMBLE CHAPTER: CLARINET PART

by Matt and Ben Harloff

# Chorales

Clarinet Part 2

O Sacred Head Now Wounded by JS Bach

Musical notation for the chorale 'O Sacred Head Now Wounded' by JS Bach, Clarinet Part 2. The piece is in G minor and common time (C). It consists of two staves of music. The first staff begins with a whole rest followed by a series of eighth notes. The second staff continues with eighth notes and includes some accidentals (sharps and naturals) and fermatas.

Be Thou My Vision

Musical notation for the chorale 'Be Thou My Vision', Clarinet Part 2. The piece is in D major and 3/4 time. It consists of two staves of music. The first staff starts with a half note followed by quarter notes. The second staff continues with quarter notes and includes some beamed eighth notes.

Faith of Our Fathers by H Hemy

Musical notation for the chorale 'Faith of Our Fathers' by H Hemy, Clarinet Part 2. The piece is in D major and 3/4 time. It consists of two staves of music. The first staff features a series of quarter notes. The second staff continues with quarter notes and includes some fermatas.

INSIDE THE CIRCLE: A PROVEN METHOD FOR A SUCCESSFUL MARCHING BAND

FULL ENSEMBLE CHAPTER: CLARINET PART

by Matt and Ben Harloff

# Full Volume

Clarinet Part 1

Excerpt #1

•=86-92

*fff* *ffff*

Excerpt #2

•=86-92

*fff* *ffff*

Excerpt #3

•=92-100

*fff* *ffff*

INSIDE THE CIRCLE: A PROVEN METHOD FOR A SUCCESSFUL MARCHING BAND

FULL ENSEMBLE CHAPTER: CLARINET PART

by Matt and Ben Harloff

# Full Volume

Clarinet Part 2

Excerpt #1

♩=86-92

*fff* *ffff*

Excerpt #2

♩=86-92

*fff*

*ffff*

Excerpt #3

♩=92-100

*fff*

*ffff*